



KSSEM

K. S. GROUP OF INSTITUTIONS

K.S. SCHOOL OF ENGINEERING AND MANAGEMENT, BANGALORE

DEPARTMENT OF CIVIL ENGINEERING

ALUMNA TALK 2019-20

As a part of ARCVIL student cell, alumni interaction becomes important to the Department experience. Students see their possible futures through alumni, and alumni remember their pasts and what they experienced as students.

One such Alumna who was invited to present a talk was Ms. Shalini Gowda S K, Technical Engineer at Adroit Technical Services on 04-03-2020 from the batch of 2012-16. She mainly focused on scope of civil engineers in property valuation. Major responsibilities include responsibilities will include financial and cash flow modeling, market information research, real estate documents analysis (including site/building plans, leases, appraisals, and mortgage underwriting/lending documents), market studies, and report writing.



Signature:

Student Coordinator

Head of Department

Professor & Head
Department of Civil Engineering
K.S. Group of Institutions
K.S. School of Engineering & Management
Bangalore-560 062.

K.



S. SCHOOL OF ENGINEERING AND MANAGEMENT - 560 109

DEPARTMENT OF CIVIL ENGINEERING

CIRCULAR

Date: 1/09/2019

Association of Consulting Civil Engineers (INDIA) Bangalore Centre and the Ramco Cements Limited have organizing the intercollege poster competition on 23rd September 2019. As a part of Engineer's Day celebration. Students who are interested can form a team of 3 members and give your names to Sushma M, Assistant Professor by 10th September 2019.

Venue: Nimhans convention Centre, Bangalore.

Sushma M

Faculty Incharge

W. Kelle

Head-Department

Principal
Department of Engineering
K.S. Group of Institutions
K.S. School of Engineering & Management
Bangalore-560 062.



K. S. GROUP OF INSTITUTIONS
K.S. SCHOOL OF ENGINEERING AND MANAGEMENT, BANGALORE

DEPARTMENT OF CIVIL ENGINEERING
INTERCOLLEGE POSTER COMPETITION

The following 5th and 7th semester students had participated at Intercollege Poster Competition which was held with the association with consulting civil engineers (India) Bangalore Center and the Ramco Cements limited. It was held on 23rd September 2019 which was organized as part of Engineer's day celebrations at Nimhans convention Centre, Bangalore.

SL. NO	USN	STUDENT NAME	SIGNATURE
1	1KG17CV039	UDAY GOWDA N	<i>Uday Gowda</i>
2	1KG16CV008	ARPITHA H G	<i>Arpitha</i>
3	1KG16CV046	SANAULLA SHARIFF S M	<i>Sanaulla Shariff</i>

Signature:

Department Co-ordinator

Head of the Department

2019-2020
Department of Civil Engineering
K.S. Group of Institutions
K.S. School of Engineering & Management
Bangalore-560082.



K. S. GROUP OF INSTITUTIONS

K.S. SCHOOL OF ENGINEERING AND MANAGEMENT, BANGALORE

DEPARTMENT OF CIVIL ENGINEERING

INTERCOLLEGE POSTER COMPETITION

The student cell-arcivil, Teaching and Non-Teaching faculties of the department of Civil Engineering congratulates the following students for winning 1st prize in the intercollege poster competition held at Nimhans convention Centre, Bangalore on 23rd September 2019.

SL. NO	USN	STUDENT NAME	SIGNATURE
1	1KG17CV039	UDAY GOWDA N	<i>Uday Gowda</i>
2	1KG16CV008	ARPITHA H G	<i>Arpitha</i>
3	1KG16CV046	SANAULLA SHARIFF S M	<i>Sanaulla Shariff</i>

Signature:

Sanaulla Shariff

Department Co-ordinator

U.K. Kelle

Head of the Department

Professor & Head
Dept. of Civil Engineering
K.S. Group of Institutions
K.S. School of Engineering & Management
Bangalore-560062.

GREEN BUILDINGS

"This is a building where DREAMS come ALIVE"

What is GREEN BUILDING?
It is the practice of increasing efficiency with which buildings use resources-energy, water and materials-while reducing building impact on human health and the environment.

PRINCIPLES:

- Structure design efficiency
- Energy efficiency
- Water efficiency
- Material efficiency
- Waste and toxic reduction



Green Building policy and codes:

- ↓ NATIONAL BUILDING CODE (NBC)
- ↓ THE BUREAU OF INDIAN STANDARDS (BIS)
- ↓ ENERGY CONSERVATION BUILDING CODE (ECBC)
- ↓ THE BUREAU OF ENERGY EFFICIENCY (BEE)
- ↓ ENVIRONMENTAL IMPACT ASSESSMENT (EIA)
- ↓ THE MINISTRY OF ENVIRONMENTAL & FOREST (MoFE)

BENEFITS!

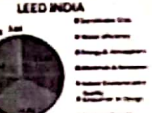
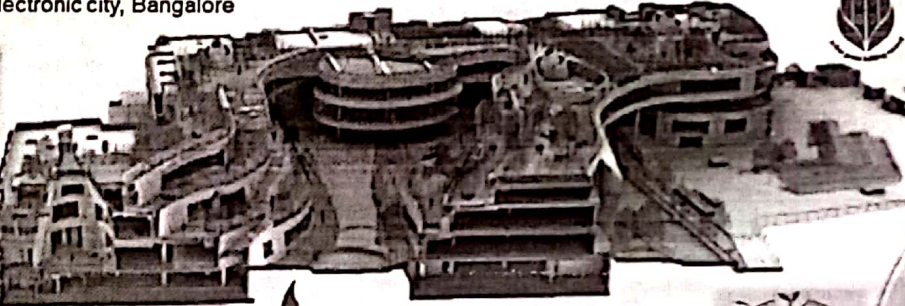
- ✓ Lower operating cost
- ✓ Increased health and productivity
- ✓ Resource efficiency
- ✓ Future proofing and resiliency
- ✓ Higher market value

What is a 'LEED'?

LEED, or Leadership In Energy and Environmental Design, is the most widely used green building rating system in the world. Available for virtually all building, community and home project types, LEED provides a framework to create healthy, highly efficient and cost-saving green buildings.

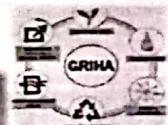
Titan Corporate Office – "INTEGRITY" Building

Hosur road, Electronic city, Bangalore



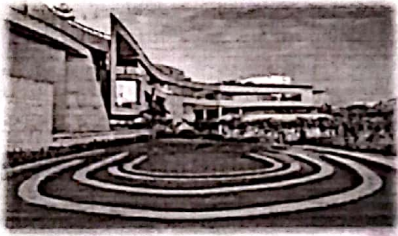
Materials:

- ❖ Reusable and recyclable
- ❖ Aerocon block
- ❖ Wool brick
- ❖ Solar Tiles
- ❖ Low/zero VOC Plastic emulsion painting
- ❖ Energy efficient appliances
- ❖ Triple-Glazed windows



A Case Study was undertaken on the Titan Company Limited Bangalore

It is located on 6.5 acre site which has a lake on the eastern side and road towards north. It has a special connection with the adjoining lake.



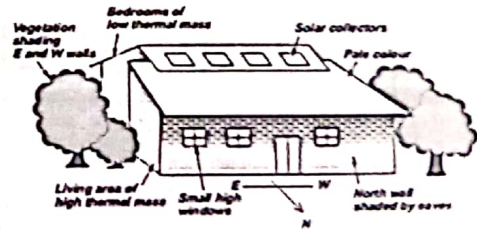
Techniques used to achieve NZEB

- External Vertical walls with vegetation cover
- Asian Gold stone cladding
- Small air gaps in the wall
- Aerocon blocks of 224mm thickness
- Atriums
- Plastic Emulsion Painting
- Terrace gardening
- Solar panels
- Sensor enabled LED lights



CONCEPT:

- ✓ USE OF SOLAR ENERGY
- ✓ PREPARATION OF LANDSCAPES TO REDUCE HEAT
- ✓ RECYCLING OF WATER AND REDUCING THE USE OF WATER
- ✓ WASTE IS MINIMIZED AT EVERY STAGE DURING THE CONSTRUCTION & OPERATION OF THE BUILDING
- ✓ USE OF NATURAL MATERIALS



What is Net-zero energy building?

Net-zero building [NZEB] is a building with zero net energy consumption, meaning the total amount of energy used by the building on an annual basis is equal to the amount of renewable energy created on the site, or in other definitions by renewable energy sources offsite.

NZEB goal is to first reduce energy demand of the building by using energy efficiency design measures and technologies (day lighting, insulation, passive solar heating or cooling, high-efficiency HVAC equipment, natural ventilation, evaporative cooling, ground-source heat pumps etc.

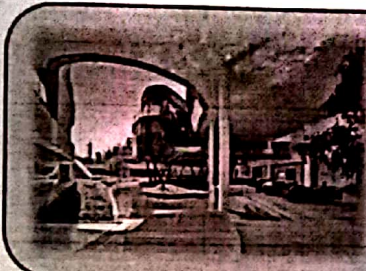


CASE STUDY: TITAN COMPANY LTD, BANGALORE

A Bio Lake is conceived towards eastern side of the site which responds to the existing lake and would seem like an extension of it. Office building with all its ancillaries is proposed around this bio lake. Building is oriented with longer sides facing North-South to bring in glare free natural light. Porosity in planning and form allows continuous movement of breeze with wind tunnels creating ventur effect. Common areas are open and non-air conditioned.

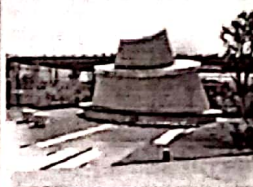
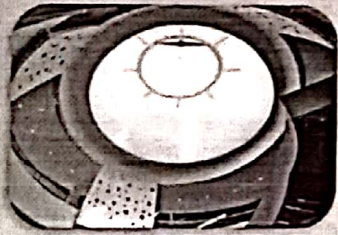


The three-floor structure has **TERRACE GARDEN** at every level. Free flowing Cascading green terraces which is reminiscent of Balinese rice fields. It is connected through external staircases gives a feeling of elevated ground at each of these floors.



The central spine along the clear water body edge is a linear double height space integrated with a series of wide steps, courtyards, product display walls, seating and Informal meeting spaces. The spine culminates into an atrium leading to the dining block. Positioned along one edge of the serene water body, framing the greenery and water, one can dine either indoors or outdoors listening to the sounds of birds or sound of water.

Atriums are provided in every block resulting in very effective sky lighting reducing the light requirements of the room, thus lessening the heat gain due to artificial lighting effects. The glass used for sky lighting purpose allows 100% light and 40% heat.

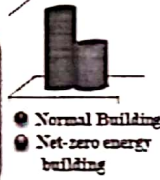


Atrium projection on the Terrace



Solar panels are planned above the terrace along the western side and above the service yard on the ground floor to generate on-site energy to adhere to 25% of the energy requirement. The landscape design is conceived as a vertical park where each level is a green terrace starting from waterfront park at the ground level to the sky park at the roof level.

A two / three stage air conditioning system is planned to minimize energy consumption by 30% compared to conventional AC. This system which requires continual air movement is coupled with highly energy efficient HVLS fans (High Volume Low Speed) which consume about 20 Watt energy while producing 200% more air volume compared to a 60W domestic ceiling fan.



IMPORTANCE

The growth and development of our communities has a large impact on our natural environment. The manufacturing, design, construction and operation of the buildings in which we live and work are responsible for the consumption of many of our natural resources.



- By increasing green buildings we can reduce environmental problems by
- ✓ Saving of energy & water
 - ✓ Temperature moderation
 - ✓ Waste reduction
 - ✓ Emission reduction

LEED Scorecard Platinum 86/110

CATEGORIES	POINTS
➤ SUSTAINABLE SITES	24 OF 26
➤ WATER EFFICIENCY	10 OF 10
➤ ENERGY AND ATMOSPHERE	27 OF 35
➤ MATERIAL AND RESOURCES	7 OF 14
➤ INDOOR ENVIRONMENTAL QUALITY	8 OF 23
➤ INNOVATION	6 OF 6
➤ REGIONAL PRIORITY CREDITS	4 OF 4



"The great India need GREEN BUILDINGS"

CONCLUSION

Energy efficient building envelope can be used as a major aspect in designing the energy efficient building as it cuts down the heat load gain of a building to a very appreciable extent.

Prepared By,
UDAY GOWDA N
SANAYLA SHARRIF SM
ARPITHA H G
KS School of Engg & Mgt



ASSOCIATION OF CONSULTING CIVIL ENGINEERS (INDIA)
BANGALORE CENTRE
 and
THE RAMCO CEMENTS LIMITED



Congratulate Mr/Ms. Uday Gowda . N from
K . S . SCHOOL OF ENGINEERING & MANAGEMENT

For being a part of the

WINNING TEAM

23.09.2019
 during the Inter College Poster Competition held on
 Organised as part of Engineers Day Celebrations 2019 on 25th September 2019
 at NIMHANS Convention Centre, Bangalore



(Signature)

Shrikant S Channal
 Secretary ACEEII - B.C

(Signature)
 R Rajesh Varadan
 Chairman ACEEII B.C



KSSEM

K. S. GROUP OF INSTITUTIONS

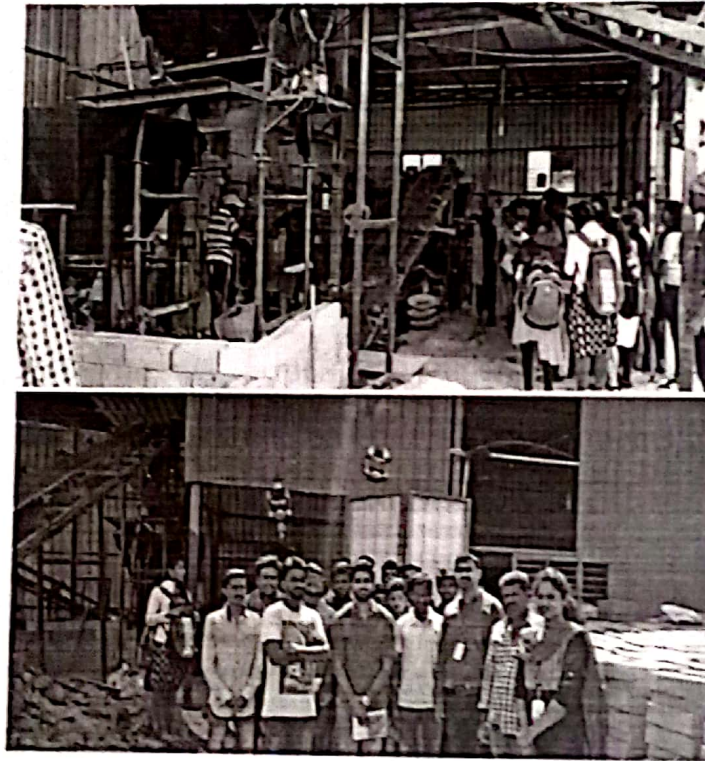
K.S. SCHOOL OF ENGINEERING AND MANAGEMENT, BANGALORE

DEPARTMENT OF CIVIL ENGINEERING

INDUSTRIAL VISIT- SRI BANASHANKRAMMA INTERLOCKING BLOCK-

05-11-2019

As a part of Design of Masonry Structures, students visited "Sri Banashankamma Interlocking Block Manufacturing Unit" on 05-11-2019. Students had a good exposure to the process involved in manufacturing of interlocking blocks.



Signature:

Student Coordinator

Head of the Department

Professor & Head
Dept. of Civil Engineering
K.S. Group of Institutions
K.S. School of Engineering & Management
Bangalore-560 062.



K. S. GROUP OF INSTITUTIONS

K.S. SCHOOL OF ENGINEERING AND MANAGEMENT, BANGALORE

DEPARTMENT OF CIVIL ENGINEERING

ALUMNUS TALK 2019-20

As a part of ARCVIL student cell, alumni interaction becomes important to the Department experience. Students see their possible futures through alumni, and alumni remember their pasts and what they experienced as students.

One such Alumnus who was invited to present a talk was **Mr. Nagarjuna**, Managing Director of **Shoba RMC and Concrete Blocks** on 23-10-2019 from the batch of 2012-16. He mainly focused to give ideas regarding production based industries in civil engineering and how challenging was it for him to establish his own venture.



Signature:

Student Coordinator

Head of Department

Professor & Head

Dept. of Civil Engineering

K.S. Group of Institutions

K.S. School of Engineering & Management

Bangalore-560 062.



KSSEM

**K. S. GROUP OF INSTITUTIONS
K.S. SCHOOL OF ENGINEERING AND MANAGEMENT, BANGALORE**

DEPARTMENT OF CIVIL ENGINEERING

TECHNICAL QUIZ 03-10-2019

An Inter house Quiz contest was organized by Student volunteers of the Department. It was a contest which covered the areas of Civil Engineering, Science, Mathematics, Sports and General Knowledge. Totally 6 teams participated. The selection of students was done by screening test held on 03/10/2019 and main quiz contest was held on 04/10/2019.

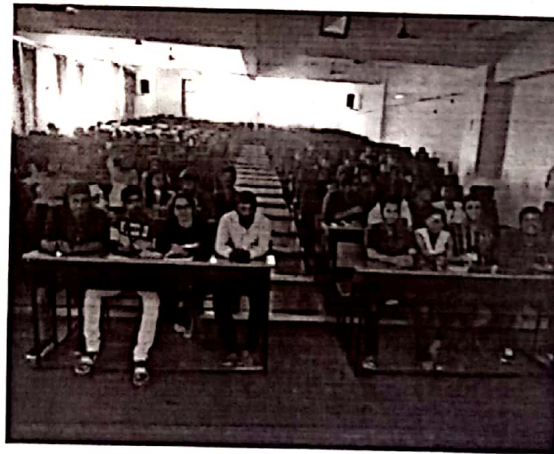
List of Prize winners:

1st Prize

1. Shuvang Agarwal
2. Vikas Venkatesh
3. Ramachandra Gowda
4. Bharath

2nd Prize

1. Namratha R K
2. Rakshith Mahesh
3. Varun C
4. Umesh Kumar Singh





KSSEM

K. S. GROUP OF INSTITUTIONS
K.S. SCHOOL OF ENGINEERING AND MANAGEMENT, BANGALORE



Signature:

Savitha

Student Coordinator

Uthappa

Head of the Department

Professor in Charge
Dep. of Mechanical Engineering
K.S. Group of Institutions
K.S. School of Engineering & Management
Bangalore-560062.



KSSEM

K. S. GROUP OF INSTITUTIONS

K.S. SCHOOL OF ENGINEERING AND MANAGEMENT, BANGALORE

DEPARTMENT OF CIVIL ENGINEERING

INDUSTRIAL VISIT- TULASI RMC PLANT- 18-09-2019

As a part of the subject “Concrete Technology”, students visited “Tulasi Concretes” on 18-09-2019. Students had a good exposure to the process involved in RMC plant.

Few of the Salient Features involved are:

1. Concrete Batching/ Mixing Plant
2. Single shaft/ double shaft/ Planetary type mixers
3. Radial conveyor belt for aggregate feeding



Signature:

Student Coordinator

Head of the Department

Professor & Head
Dept. of Civil Engineering
K.S. Group of Institutions
K.S. School of Engineering & Management
Bangalore-560 062.



K. S. GROUP OF INSTITUTIONS

K.S. SCHOOL OF ENGINEERING AND MANAGEMENT, BANGALORE

DEPARTMENT OF CIVIL ENGINEERING

TECHNICAL EVENT- MODEL MAKING COMPETITION- 30-09-2019

Model Making Competition was organized by the students of Department of Civil Engineering with an objective to enhance the creativity and presentation skills in students. The event was held on 30th September 2019 with theme as "Bridges and High Rise Structures". The event was open for all civil engineering students from different colleges across Bangalore. The contest witnesses total 25 registrations from KSSEM and five other colleges. Two best models among bridges as well as high structures were identified based on the overall presentation and students were awarded.

List of Prize winners:

Tall Structures 1st Prize

1. Vikas
2. Nandan Gowda
3. Rohith P G
4. Mukesh

Tall Structures 2nd Prize

1. Mohammad Shoiab
2. Umesh Kumar Singh
3. Salman

Bridges 1st Prize: ACSE college

1. Rakesh
2. Vinod Kumar
3. Venkatesh
4. Yashwanth

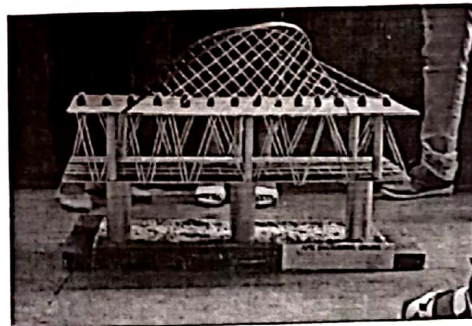
2nd Prize: AMC college

1. Krishna
2. Shivani



K. S. GROUP OF INSTITUTIONS
K.S. SCHOOL OF ENGINEERING AND MANAGEMENT, BANGALORE

- 3. Harini
- 4. Akshatha



Signature:

Student Coordinator

Head of the Department

Professor & Head
Dept. of Civil Engineering
K.S. Group of Institutions
K.S. School of Engineering & Management
Bangalore-560 062.



KSSEM

K. S. GROUP OF INSTITUTIONS
K.S. SCHOOL OF ENGINEERING AND MANAGEMENT, BANGALORE

DEPARTMENT OF CIVIL ENGINEERING

STUDENT COORDINATOR RESULT ANNOUNCEMENT 2019-20

Based on the maximum votes, we are happy to announce that Mr. Sanaulla Shariff S, has been elected as student coordinator of ARCVIL for the year 2019-20.

Signature:

Student Coordinator

Faculty Coordinator

Head of the Department

Professor & Head
Dept. of Civil Engineering
K.S. Group of Institutions
K.S. School of Engineering & Management
Bangalore-560062.



K. S. GROUP OF INSTITUTIONS

K.S. SCHOOL OF ENGINEERING AND MANAGEMENT, BANGALORE

DEPARTMENT OF CIVIL ENGINEERING

STUDENT COORDINATOR ELECTION ANNOUNCEMENT 2019-20

Based on the following points, the best shall be elected by the students of IV, III & II year on 05-08-2019:

1. Work closely with department students, management, faculties and parents
2. Interact with students regularly to organize events
3. Involve as many students as possible in the activities of the cell

The following students are nominated for the post of Student coordinator for the year 2019-20:

1. Prathibha Prakash- 1KG16CV042
2. Sanaulla Shariff S M- 1KG16CV046
3. Om Swaroop R K- 1KG16CV040
4. Nithin Ananth- 1KG16CV038
5. Yumnum Monish Singh- 1KG16CV059

Signature:

Student Coordinator

Faculty Coordinator

Head of the Department

Department of Civil Engineering
K. S. Group of Institutions
K.S. School of Engineering & Management
Bangalore-560 062.